

Calder



With adjacent lawns and colonnades this is our most popular room for wedding receptions and parties.

Whether for 50 or 150 we can create the right ambience to make your event a success. For conferences in the

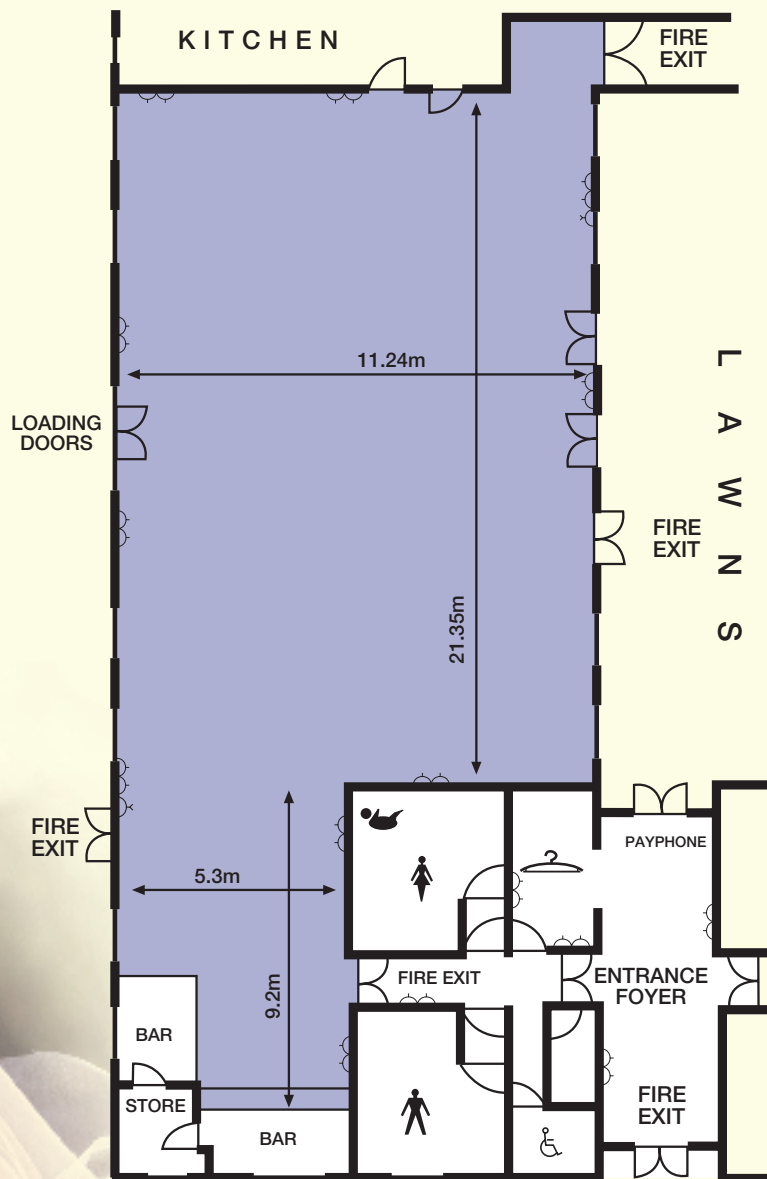
Derwent Room, the **Calder Room** is perfect for registration, exhibition displays and catering purposes.

Calder Room Capacities

LAYOUT STYLE	NUMBER
THEATRE	280
COCKTAIL RECEPTION	400
LUNCH/DINNER	210
DINNER & DANCE	150
CLASSROOM	90
BOARDROOM	60
U-SHAPE	50
CABARET	120

Technical Details

Room Height	
FLOOR TO CEILING	3.1m
Loading Doors	
HEIGHT 2.33m - WIDTH 2.67m	
TOTAL FLOOR SPACE	284m²



Legend

- CLOAKROOM
- LADIES' TOILET
- GENTS' TOILET
- DISABLED TOILET
- BABY CHANGE
- POWER SOCKET
- TV AERIAL POINT

